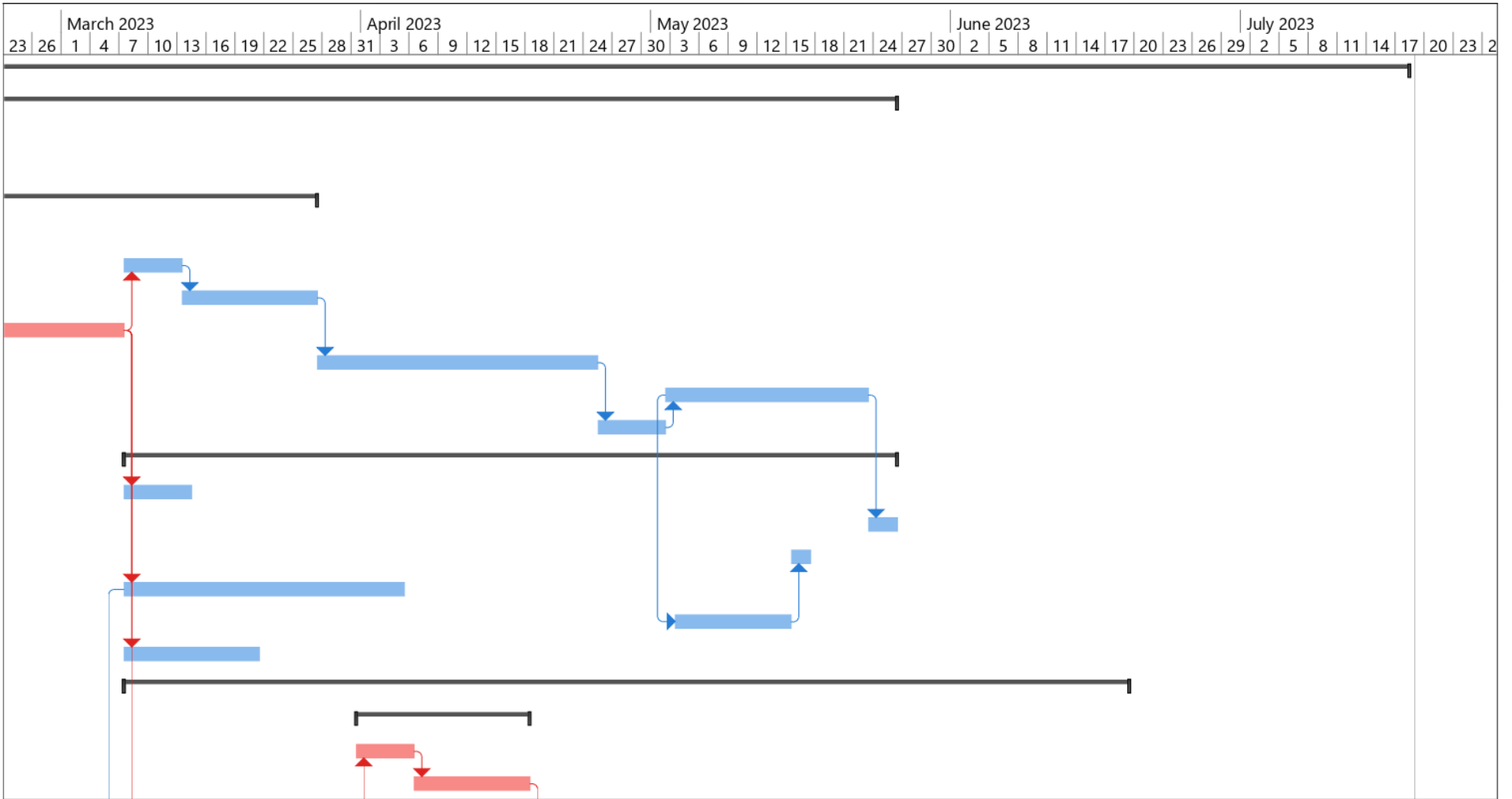


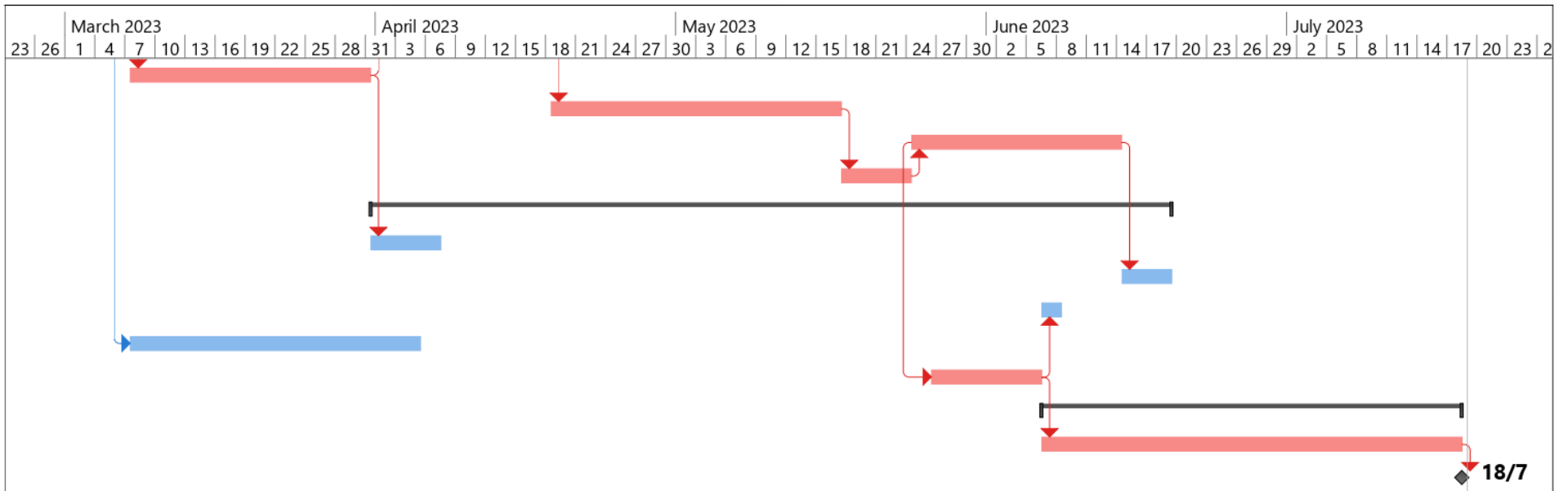
ID	Task Mode	Task Name	Duration	Start	Finish	February 2023											
						24	27	30	2	5	8	11	14	17	20	23	
24		Muro de Bloques	18 days	Tue 7/3/23	Fri 31/3/23												
25		Terminacion de superficies	21 days	Tue 18/4/23	Wed 17/5/23												
26		Ventanas y Puertas	15 days	Wed 24/5/23	Wed 14/6/23												
27		Terminacion de Pisos y Paredes	5 days	Wed 17/5/23	Wed 24/5/23												
28		Instalaciones Electricas	56 days	Fri 31/3/23	Mon 19/6/23												
29		Canalizacion	5 days	Fri 31/3/23	Fri 7/4/23												
30		Alambrado	3 days	Wed 14/6/23	Mon 19/6/23												
31		S/C de Accesorios	2 days	Tue 6/6/23	Thu 8/6/23												
32		Instalaciones Sanitarias	21 days	Tue 7/3/23	Wed 5/4/23												
33		Acabados y pintura	7 days	Fri 26/5/23	Tue 6/6/23												
34		Exterior	30 days	Tue 6/6/23	Tue 18/7/23												
35		Miscelaneos Exteriores	30 days	Tue 6/6/23	Tue 18/7/23												
36		Fin del proyecto	0 days	Tue 18/7/23	Tue 18/7/23												

Project: Cronograma Santana a
Date: Mon 23/1/23

Task		Inactive Summary		External Tasks	
Split		Manual Task		External Milestone	
Milestone		Duration-only		Deadline	
Summary		Manual Summary Rollup		Critical	
Project Summary		Manual Summary		Critical Split	
Inactive Task		Start-only		Progress	
Inactive Milestone		Finish-only		Manual Progress	



Project: Cronograma Santana a Date: Mon 23/1/23	Task		Inactive Summary		External Tasks	
	Split		Manual Task		External Milestone	
	Milestone		Duration-only		Deadline	
	Summary		Manual Summary Rollup		Critical	
	Project Summary		Manual Summary		Critical Split	
	Inactive Task		Start-only		Progress	
Inactive Milestone		Finish-only		Manual Progress		



Project: Cronograma Santana a Date: Mon 23/1/23	Task		Inactive Summary		External Tasks	
	Split		Manual Task		External Milestone	
	Milestone		Duration-only		Deadline	
	Summary		Manual Summary Rollup		Critical	
	Project Summary		Manual Summary		Critical Split	
	Inactive Task		Start-only		Progress	
	Inactive Milestone		Finish-only		Manual Progress	